



APEX

RESIDENCE

NAIROBI/KILIMANI



YOUR NEW HOME IN KILIMANI - NAIROBI

Apex Residence is firmly established as one of the capital's favourite residential project. A place for 106 1, 2 and 3 bedroom apartments rising to 13 storeys high. The Residence is styled with contemporary elegance inside and out, with great views to match. Besides the delights of relaxing in your safe and luxurious residence, some of the Nairobi's charming facilities as shopping, recreation and entertainment are just a few minutes away in Kilimani.





ELEGANT LIVING WITH DELICATE ARCHITECTURE

Apex Residence represents the best example of modern architecture and design lending itself to both superior form with ample living areas and masterful recreational facilities as Fitness Saloon, Cafe, Children Playground and Family Club. We welcome you to our high living standards and ask that you please indulge yourself in a most deserved and truly special luxurious and safe lifestyle.

Our quality standards:

- European construction standards
- Turkish high-end craftsmanship and experience
- International design team
- High quality materials
- Premium craftsmanship & finishing quality
- Safe and fast elevators
- 24 hour generator back up
- Water storage / Borehole
- Apple Intercom system for every unit
- Sufficient and safe closed carpark
- Professional residence management
- 24 hour security



DESIGNED FOR PRESTIGE PRIVILEGED AND SOPHISTICATED

High and wide windows offer light-filled apartments, with every thoughtful design built in. Each apartment has a different ambience, and a different view with the opportunity to enjoy through a balcony.

Living rooms with high quality parquet floors brings your home pure luxury.

Bathrooms with high end ceramics and sanitary appliances fully respond all your needs.

Attention to detail is a key component of each home.





Fitness Club
At The Residence gym, you will have access to luxurious and fully equipped fitness on-site, prepped to indulge every kind of workout, 7 days a week.



Cafe
Meet your loved ones in our Cafe Apex which offers tasty food and beverages.

SOCIAL FACILITIES

Apex Residence accommodates on-site amenities including the 24 hour security, residence management, gym, cafe, indoor playground and family club.

At the ground and basement floor level you'll find a safe parking area connected to the principal entrance to the building.

3rd Floor is delicately designed for social facilities to ensure the ultimate comfort of the residents.



Family Club & Indoor Playground
For your children's ultimate entertainment and safety, enjoy our indoor playground and family club.

REINTERPRETATION OF COMFORT

Each apartment is designed with understanding of delicate detailing by our highly experienced and skilled international architectural team. All of the units have access to balconies through very large openings providing abundant natural light and ventilation.

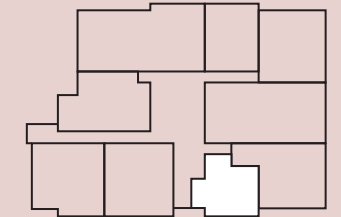
Exclusive cabinet systems and appliances, functional and spacious kitchens will bring you and your family quality time.

Take your place at the best district of Nairobi.



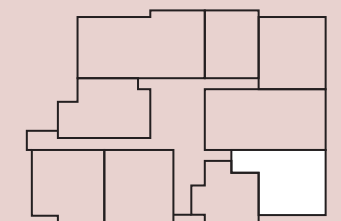
APARTMENT Type 1

1+1 (80 m² brutto)



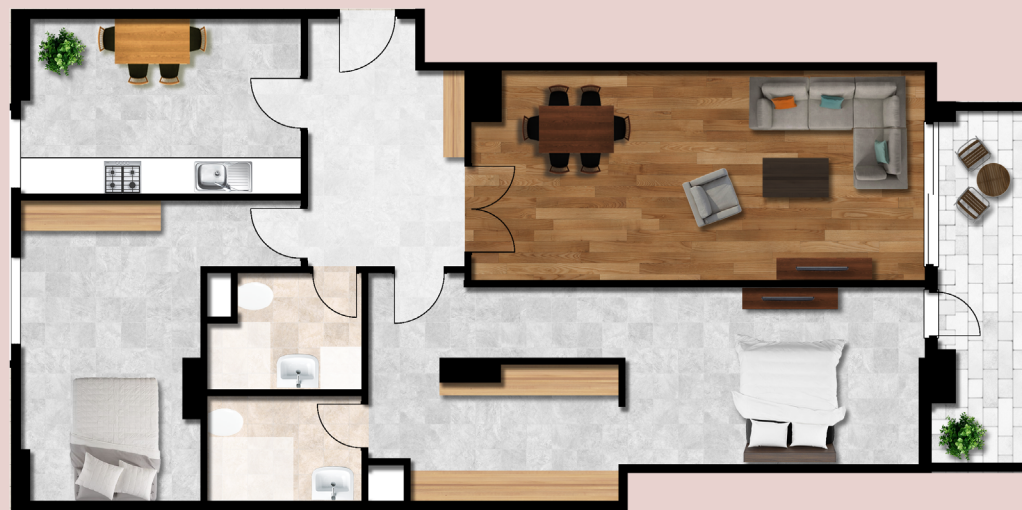
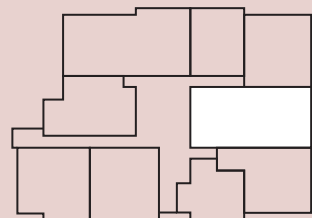
APARTMENT Type 2

2+1 (136 m² brutto)



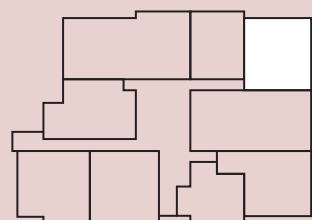
APARTMENT Type 3

2+1 (142 m² brutto)



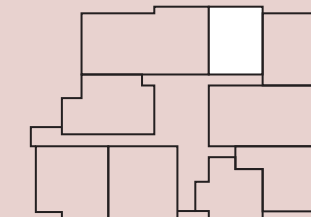
APARTMENT Type 4

2+1 (125 m² brutto)



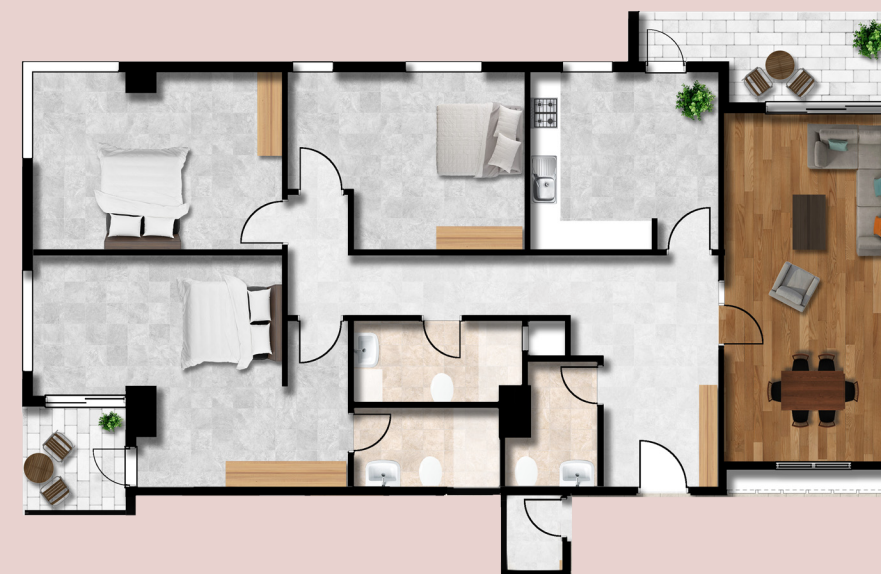
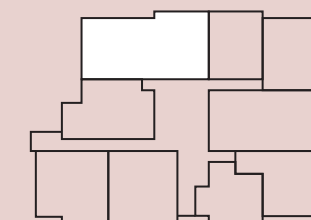
APARTMENT Type 5

1+1 (75 m² brutto)



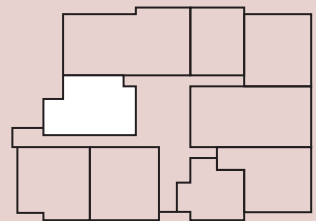
APARTMENT Type 6

3+1 (177 m² brutto)



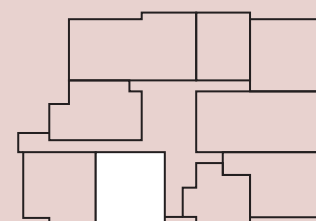
APARTMENT Type 7

2+1 (114 m² brutto)



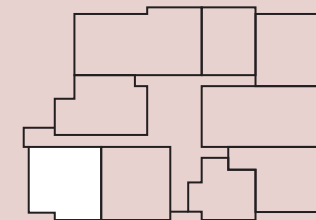
APARTMENT Type 9

2+1 (112 m² brutto)



APARTMENT Type 8

2+1 (110 m² brutto)



UNIQUE LOCATION KILIMANI

- 1 Yaya Centre
- 2 Swedish School
- 3 Sport Clubs
- 4 Kindergarten
- 5 Primary School
- 6 Golf Course
- 7 High School
- 8 College
- 9 Nairobi Park
- 10 Nairobi Zoo
- 11 Nakumatt Junction Shopping Mall
- 12 Adlife Plaza
- 13 Prestige Plaza

Apex Residence Ltd.
P.O.Box 13418-001000
Nairobi, Kenya
+254 729 221111
+254 721 898989
www.apex-residence.com
info@apex-residence.com

Main Contractor:
ESFO Ltd.

Design Team:
Vizarchi

[facebook@apexresidence0](https://www.facebook.com/apexresidence0)
[instagram@apexresidence](https://www.instagram.com/apexresidence)

